



## **A Beautiful Bride Boutique**

### **Bridal Veil Faq**

The veil is the most defining accessory in a wedding. It's the only item you can wear with pajamas, and everyone who sees you knows that you're a bride. The perfect veil can make you feel as much of a bride as the perfect gown does. And just like your grandmother's pearls, a stunning veil can be passed down for generations and become a family heirloom.

If you think you're not a veil girl – think again. A veil is the final touch to elevate your bridal look to something extraordinary and create a memorable moment for you, and your guests. There are a wide range of veils that will capture your own unique personal style, while creating a chic and elegant silhouette. Whether you're looking for a dreamy, long wedding veil to fall softly behind you, or something more unique with our elegant collection of short wedding veils, our range of lace, pearl and tulle veils, and wedding accessories includes something for every bride.

There are several different option for veils. The length, styles & embellishments are endless. Following are some helpful tips on selecting just the right veil to complement your wedding look!

## The Base:

The different options of plastic, metal, wire comb or elastic loops are best consulted with your bridal hairstylist. Depending on the type of hair style chosen, they will almost always have a preference to the type of base being used.

Is there a big difference between a plastic comb and a wire comb?

Most definitely! Ask most hairstylists and they will tell you there is a huge difference between the two. The wire comb will always anchor into the hair more securely and with less bulk. It can be removed more easily without messing up your hairdo. It can also be anchored into place with additional bobby pins, something impossible to do with a thick and slippery plastic comb.

Here is a quick rundown of the base options:

Plastic or Wire Comb: Ideal when placing the veil at the top of the head. Also suitable when worn at the back of the head below an updo.

Elastic Loops: Perfect to place around any bun shaped updo as the elastic will allow your hairstylist to conform the veil to the shape of the updo.



## **Beaded Veils:**

Should I add beads to my veil? When advising brides we always offer suggestions based on the theory that less is more.

If their gown already has beads on it, they probably don't need to add more to the veil. The sparkle will shine right through the tulle of the veil. Beads can always be added to the part of a floor length veil that extends beyond the train. Adding a fully beaded veil to a beaded gown looks best for formal white tie evening weddings.

### **HAND BEADED FLOOR LENGTH VEILS**



## **The Blusher:**

Many brides are now choosing not to wear a blusher as they take their big stroll down the aisle. That's o.k. so long as you aren't having a formal church wedding that frowns upon exposed shoulders. If this is the case then a blusher is a subtle compromise that will at least cover your shoulders on the way down the aisle, if not on the way back up.

We also encourage all brides to have their photographer take at least one close-up of them with the blusher pulled forward. It makes for a beautifully romantic portrait.

## **Ceremony Only?**

Do I have to wear a veil at my reception is one of the most often asked questions we hear. You don't have to do anything, but keep in mind that your photographer will be taking pictures throughout your reception: the toast, the first dance, the bouquet toss, so you may want to keep your veil on at least through the cake cutting.

Many photographers over the years have said they prefer the veil left on during the reception as it gives the finished wedding album a nice flow and continuity if you look the same from the first to final page. Otherwise you may go from looking like the "Bride" at your ceremony to looking like "the girl in the white dress" at your reception.

Another point in favor of keeping the veil on is that if your hair is pinned up the veil softly frames your face and looks beautiful in pictures... A well cut veil is very photogenic!

## **Color:**

White is a beautiful bright white only used with synthetic fabrics. Silk is never this shade of bright white.

Shimmer White is the same bright shade of white described above but has a bright sheen that makes it sparkle.

Diamond White is the most popular shade of veils. A bit warmer than white but not as yellow as ivory. It is the color of white silk. Also known by the names candle lit white and silk white. We often have brides with ivory gowns wear diamond white, as it is a more complementary color with most complexions, and close enough to ivory that it doesn't clash with an ivory gown.

Shimmer Diamond White is the same beautiful color as the diamond white described above but has a bright sheen that makes it sparkle.

Ivory is a true ivory. It has a more yellow color to it and is sometimes offered in different shades.

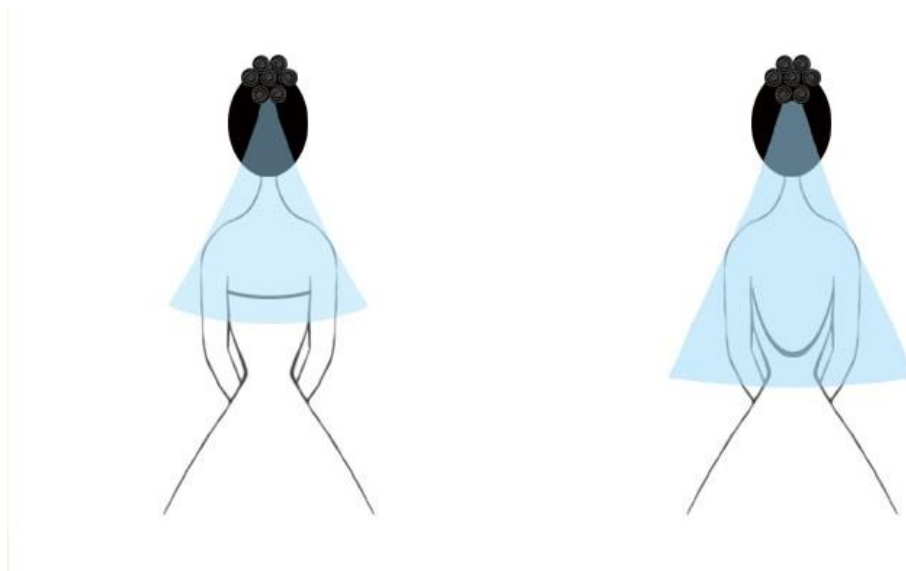
Shimmer Ivory is a slightly lighter shade than the one listed above. It has a shiny finish to it and is a nice accent with a plain gown that needs to be dressed up a bit.

## **Length:**

1. Some of the most popular veils are the waist and fingertip lengths.
2. In most instances longer is more formal than shorter.

How long should it be? The veil should fall a minimum of 3" below the back neckline of your gown. You will appear taller and it looks more stylish if there is no break showing exposed skin between the veil and the top of the gown.

Illustrated below:

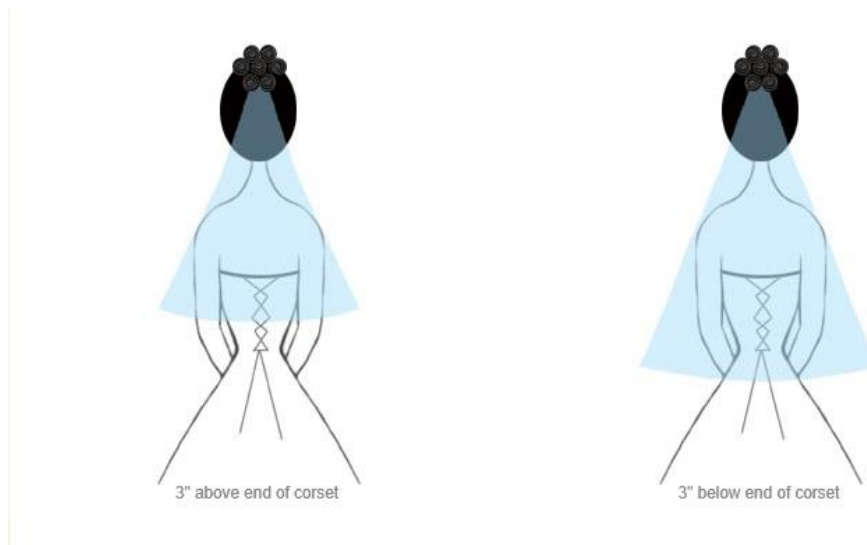


## Embellishments?

Embellishments on the back of your gown?

The veil will complement your gown best if it falls 3" above or below any detail work on the back of your gown such as silk flowers or a bow at the waist or the bottom of where a corseted back or a bodice embellished with lace or embroidery ends.

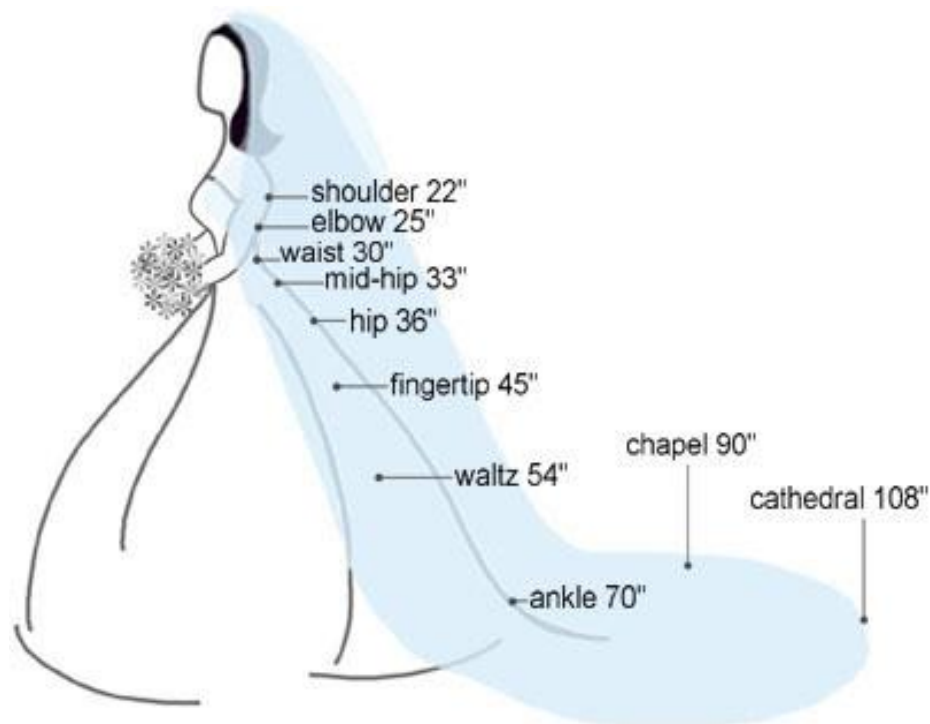
Illustrated below:



Floor length veils look best when they are either the same length as the train of the gown, or a minimum of 20" beyond the hem or train of the gown.

## Length Chart:

Keep in mind that the names of these lengths are approximations and will vary depending on the height of each individual bride. It is the length of your torso, for instance being long or short waisted, which will effect where the veil falls to. Keep in mind that it is the back of your gown that determines the best length to complement your gown.



## Nylon or Silk?

Brides often ask about silk tulle veils. While silk tulle sounds elegant and romantic, it is actually stiffer than nylon tulle, and has a heavier netting look as the individual fibers are spaced further apart than the nylon bridal illusion.

Silk tulle should also be finished on the edge as it will fray over time.

Another major factor to consider is a dramatic cost difference. Quality silk tulle runs \$300 a yard or more, and that is only the cost of the tulle, not any of the labor to cut, sew or edge the veil.

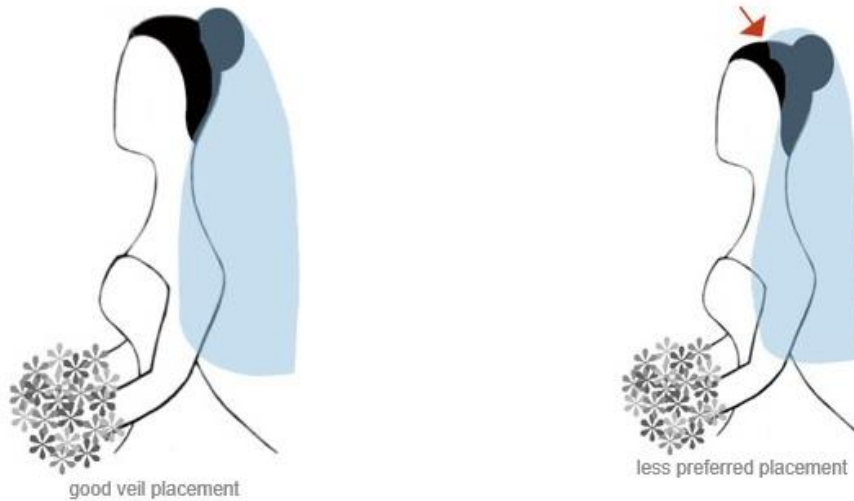
Cost aside, most bride's preference has always been for nylon illusion as it has a much more delicate and light appearance.

**Placement:**

Veil Worn at Top of the Head

Hair Up: If you are wearing your hair in an updo the veil or headpiece will be most secure if you anchor it on a wire comb directly in front of the updo.

Illustrated below:



Back of the Head

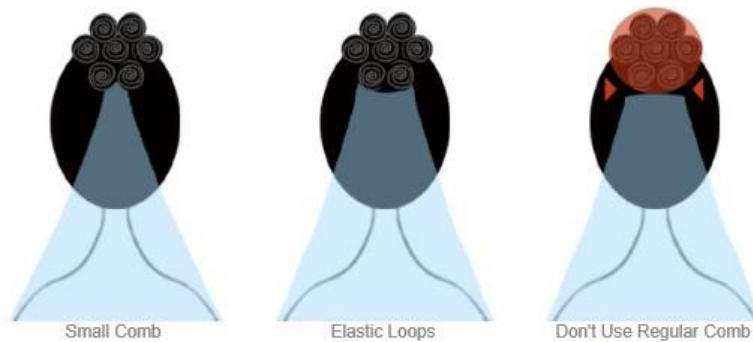
Hair Up:

When placing the veil beneath an updo on the back of the head, either a small comb or elastic loops are preferable to a regular comb.

The small comb tucks into the hair nicely and can be anchored with one or two bobby pins.

The elastic loops are pinned into place conforming to the exact shape of the hairstyle.

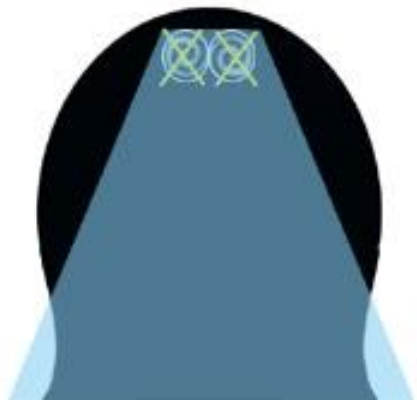
As seen in the third illustration, the length of a standard comb does not conform to the shape of the headpiece, which leaves an awkward looking gap between the two.



### Hair Down:

When wearing a veil at the top of the head, the comb needs something to anchor into. If you are fortunate enough to be working with a professional hairstylist they will know what needs to be done.

If you are on your own, here is a suggestion: Create 2 flat pin curls twisting your own hair into place. From the front slip the comb beneath them as illustrated below.



Remember that accessories are just that. They are meant to accent your bridal gown, not overpower it.

Take a look at our large selection of gorgeous bridal veils in several lengths and styles to complement your gorgeous bridal gown.

<https://abeautifulbrideboutique.weebly.com/veils.html>